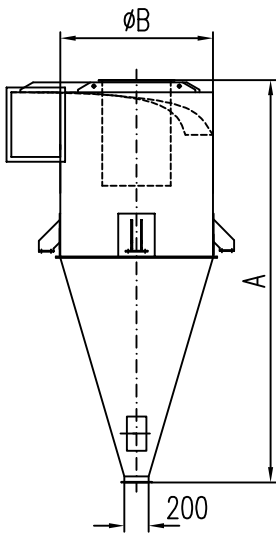
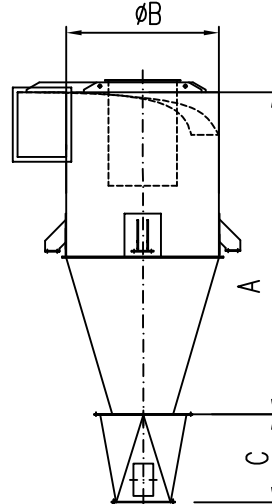


# Abscheider STEK Separator STEK



Typ Type	Leistung capacity m <sup>3</sup> /min	A	ØB
STEK10	15-17	880	400
STEK12	18-22	1080	460
STEK14	23-30	1180	520
STEK17	31-39	1480	620
STEK19	40-50	1700	670
STEK23	51-69	2170	815
STEK26	70-80	2400	900
STEK28	81-95	2680	1000
STEK30	96-120	2900	1120
STEK32	121-150	3000	1120
STEK34	151-180	3200	1250
STEK36	181-220	3560	1400
STEK38	221-270	3900	1400
STEK40	271-320	4200	1600
STEK42	321-380	4480	1600

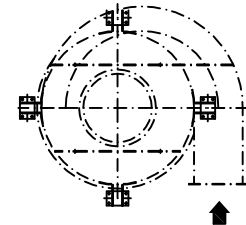
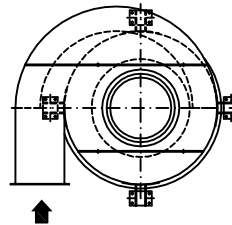
# Abscheider STEK mit Autotrichter Separator STEK with cone incl. relief outlet



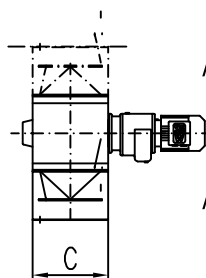
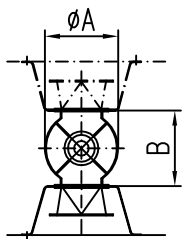
Typ Type	Leistung capacity m <sup>3</sup> /min	A	ØB	C
STEK26	70-80	1800	900	720
STEK28	81-95	2070	1000	720
STEK30	96-120	2310	1120	1000
STEK32	121-150	2420	1120	1000
STEK34	151-180	2630	1250	1000
STEK36	181-220	3000	1400	1200
STEK38	221-270	3350	1400	1200
STEK40	271-320	3650	1600	1200
STEK42	321-380	3920	1600	1200

Ausführung: links  
design: left

Ausführung: rechts  
design: right



# Schleuse Typ 300 Airlock type 300

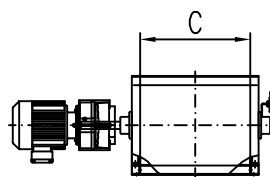
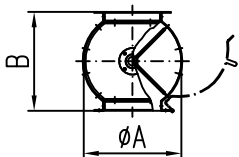


Ausführung: hängend  
suspended design

Ausführung: stehend  
vertical design

Typ Type	Inhalt capacity dm <sup>3</sup>	ØA	B	C	Antrieb Drive
Ø 300	15,5	300	310	310	0,55 kW

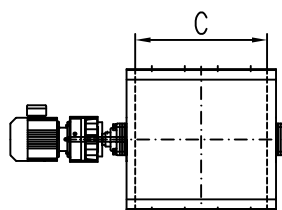
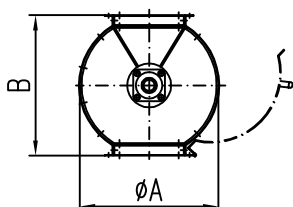
# Schleuse Typ 400 Airlock type 400



Flachgetriebemotor  
with flat gear motor

Typ Type	Inhalt capacity dm <sup>3</sup>	ØA	B	C	Antrieb Drive
Ø400/300	33,2	400	405	300	1,1 kW
Ø400/450	49,8	400	405	450	1,1 kW
Ø400/600	66,4	400	405	600	1,5 kW

# Schleuse Typ 600 Airlock type 600



Flachgetriebemotor  
with flat gear motor

Typ Type	Inhalt capacity dm <sup>3</sup>	ØA	B	C	Antrieb Drive
Ø630/600	168	600	640	600	1,5 kW
Ø630/1200	340	600	640	1215	1,5 kW

- Änderungen vorbehalten -  
- subject to alterations -