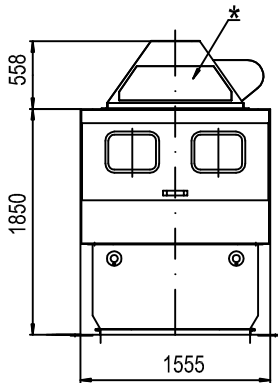


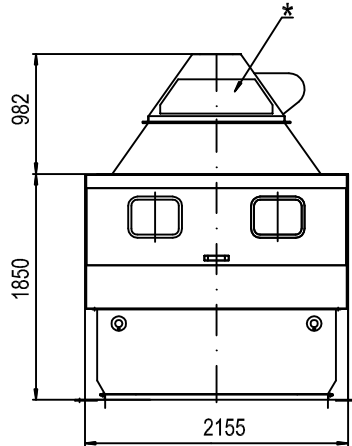
Kompostausleser Typ "KA" Compost separator type "KA"

KA 6



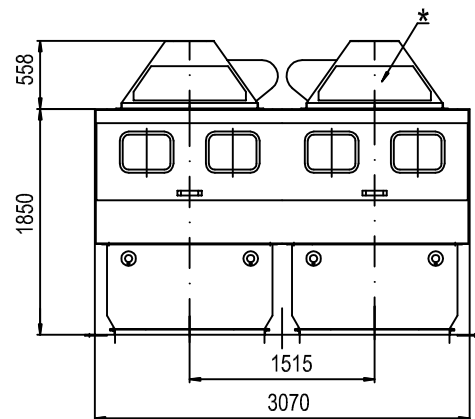
* Pendelverteiler (Option)

KA 9



* Distributing box (Option)

KA 12

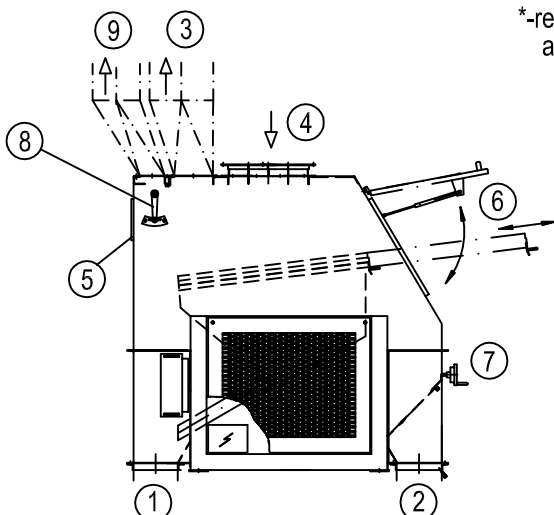


Typ	Leistung m3/h *	Antrieb Kw	Ventilator		Abluft m3/h	Maschinengewicht kg unverb.
			Kw	m3/h		
KA6-H	18	1.5	2x4	2x6655	14000	1600
KA6-HF	18	1.5	2x4	2x6655	22000	1650
KA9-H	27	1.5	2x5.5	2x8925	21000	1700
KA9-HF	27	1.5	2x5.5	2x8925	33000	1775
KA12-H	36	1.5	4x4	4x6655	28000	3000
KA12-HF	36	1.5	4x4	4x6655	44000	3100

*-Bezogen auf eine Produktfeuchte
von 35% und eine Korngrösse 15mm

type	capacity m3/h *	drive kW	fan		exhaust air m3/h	machine weight kg unpacked
			kW	m3/h		
KA6-H	18	1.5	2x4	2x6655	14000	1600
KA6-HF	18	1.5	2x4	2x6655	22000	1650
KA9-H	27	1.5	2x5.5	2x8925	21000	1700
KA9-HF	27	1.5	2x5.5	2x8925	33000	1775
KA12-H	36	1.5	4x4	4x6655	28000	3000
KA12-HF	36	1.5	4x4	4x6655	44000	3100

*-related to a product humidity of 35%
and a granulation of 15mm



- | | |
|---|---|
| 1 Leichtteilauslauf | 1 Outlet for light particles |
| 2 Schwerteilauslauf | 2 Outlet for heavy particles |
| 3 Abluft | 3 Exhaust air |
| 4 Einlauf | 4 Inlet |
| 5 Sichtfenster | 5 Window |
| 6 Servicetür | 6 Service door |
| 7 Luftverstellung
(Option: mit Frequenzumformer) | 7 Air regulator
(Option: with frequency converter) |
| 8 Verstellung Folienabsaugung
(Option) | 8 Regulator for foil suction
(Option) |
| 9 Abluft für Foilen
(Option) | 9 Exhaust air for foils
(Option) |

- Änderungen vorbehalten -
- subject to alterations -